

Project Management Group

---

# **ROGUN HYDROPOWER PROJECT**

Volume 3, A8: Community Health and Safety Plan

**TYPE OF DOCUMENT (VERSION) PUBLIC**

**PROJECT NO. UK- 70097413**

**OUR REF. NO. ESIA-VOL3-A8-CHSMP-REV01-ENGLISH**

**DATE: OCTOBER 2025**

# QUALITY CONTROL

---

# CONTENTS

---

1	INTRODUCTION	1
1.2	SUPPORTING PLANS	1
2	APPLICABLE STANDARDS AND GUIDELINES	2
3	EXISTING CONDITIONS	3
3.1	SITE LOCATION	3
3.2	IDENTIFIED RISKS	3
4	ROLES AND RESPONSIBILITIES	5
5	COMMUNITY HEALTH AND SAFETY MANAGEMENT	9
5.2	MONITORING	1
5.3	REPORTING	1

---

## ***TABLES***

Table 4-1 – Roles and Responsibilities	5
Table 5-1 – Community Health and Safety Mitigation and Monitoring	1

---

## ***FIGURES***

Figure 4-1 - Organizational Structure of the Rogun HPP Project	5
Figure 4-2 - Reporting Lines for Roles related to Community Health and Safety	8

# 1 INTRODUCTION

---

- 1.1.1. The Rogun Hydropower Project (HPP) located in the Republic of Tajikistan, is currently undergoing an extensive phase of construction and partial operation, with two turbines already in active use. The Project is owned by the Rogun Open Joint Stock Company (JSC) (hereafter referred to as 'Rogun JSC') and managed by the Project Management Group (PMG) for Energy Facilities Construction under the President of the Republic of Tajikistan. Rogun JSC is responsible for overseeing both the construction and long-term operation of the Project.
- 1.1.2. This document is the Community Health and Safety Management Plan (CHSMP), developed as part of the Volume III, Environmental and Social Management Plan (ESMP) of the Environmental and Social Impact Assessment (ESIA).
- 1.1.3. This plan is based on the findings of the studies within the ESIA, as well as the Labour Management Audit and Resettlement Audit.
- 1.1.4. The purpose of this report is to establish the minimum criteria for community health and safety requirements and expectations that will be taken for the Project.
- 1.1.5. The objectives of this CHSMP are to:
- Support Rogun PMG in meeting the requirements of the Project's ESMP and for community health and safety management.
  - Ensure compliance with all applicable standards, frameworks, and guidelines outlined in the World Bank Environmental and Social Standards (ESS) and relevant regulations of the Republic of Tajikistan.
  - Provide and maintain a safe and healthy environment for Project-affected communities.
  - Clarify roles and responsibilities within the Rogun HPP Project team, including contractors and subcontractors, and establish a framework for Rogun JSC to set and enforce community health and safety standards.
  - Provide a foundation for continuous review and adaptation of community health and safety measures to reflect changing site conditions, construction progress, and operational phases.
- 1.1.6. This CHSMP shall remain a living document, updated as necessary to maintain alignment with the Project objectives and applicable standards.

## 1.2 SUPPORTING PLANS

- 1.2.1. The following plans and documents support the CHSMP and should be read in conjunction with this document to ensure a coordinated approach to community health and safety:
- Volume 3: A1 Environmental and Social Commitments Register;
  - Volume 3: A7 Security Management Plan;
  - Volume 3: A9 Traffic Management Plan; and
  - Volume 3: B12 Emergency Preparedness and Response Plan.

## 2 APPLICABLE STANDARDS AND GUIDELINES

---

- 2.1.1. This document has been informed by key regulatory requirements and aligns with principles from essential guidance documents, including national and international standards and best practices related to community health and safety.
- Tajikistan Law, including International Agreements to which Tajikistan is a Party:
    - Law of the Republic of Tajikistan on Air Protection (2012);
    - Law of the Republic of Tajikistan On Production and Consumption Waste (2005, last amended in 2011);
    - Law of the Republic of Tajikistan on the drinking water and drinking water supply (December 29, 2010);
    - Code of Health Care of the Republic of Tajikistan of May 30, 2017. No. 1413 (as amended by the Law of the Republic of Tajikistan of 29.01.2021 No. 1762);
    - Law of the Republic of Tajikistan on the protection of population and territories from emergency situations of natural and human-made character (July 15, 2004);
    - Law on the Safety of Hydraulic Structures (2010 as amended in 2018);
    - International Covenant on Economic, Social and Cultural Rights (1976); and
    - Occupational Safety and Health Convention (1981).
  - World Bank Environmental and Social Framework (ESF) Standards:
    - Environmental and Social Standard 1 (ESS1): Assessment and Management of Environmental and Social Risks and Impacts
    - Environmental and Social Standard 2 (ESS2): Labour and Working Conditions
    - Environmental and Social Standard 4 (ESS4): Community Health and Safety
  - World Bank Guidelines and Notes:
    - General Environmental, Health, and Safety (EHS) Guidelines (2007): Section 3.0: Community Health and Safety
    - Guidance Note for Borrowers: Environmental & Social Framework for IPF Operations – ESS4: Community Health and Safety (June 2018)
    - Good Practice Note: Assessing and Managing the Risks of Adverse Impacts on Communities from Project-related Labor Influx (June 2021)
  - Asian Development Bank (ADB) Environmental and Social Framework (ESF) (September 2024)

## 3 EXISTING CONDITIONS

---

### 3.1 SITE LOCATION

- 3.1.1. The Rogun Hydropower Project (HPP) is located in the Rogun region of Tajikistan, approximately 100 kilometres east of Dushanbe along the Vakhsh River. The surrounding area is characterized by mountainous terrain and steep valleys typical of the region's rugged topography.
- 3.1.2. The land surrounding the Project site is sparsely populated, with limited agricultural activities in nearby villages and primarily undeveloped land. The Vakhsh River valley hosts multiple hydropower facilities, with Rogun HPP positioned as the uppermost plant in this cascade, upstream of the Nurek, Baipaza, Sangtuda 1, Sangtuda 2, and Golovnaya HPPs.
- 3.1.3. Further detail on the site location and project background is provided within **Volume 1, Chapter 1: Introduction** and **Volume 1, Chapter 3: Project Description** of this ESIA.

### 3.2 IDENTIFIED RISKS

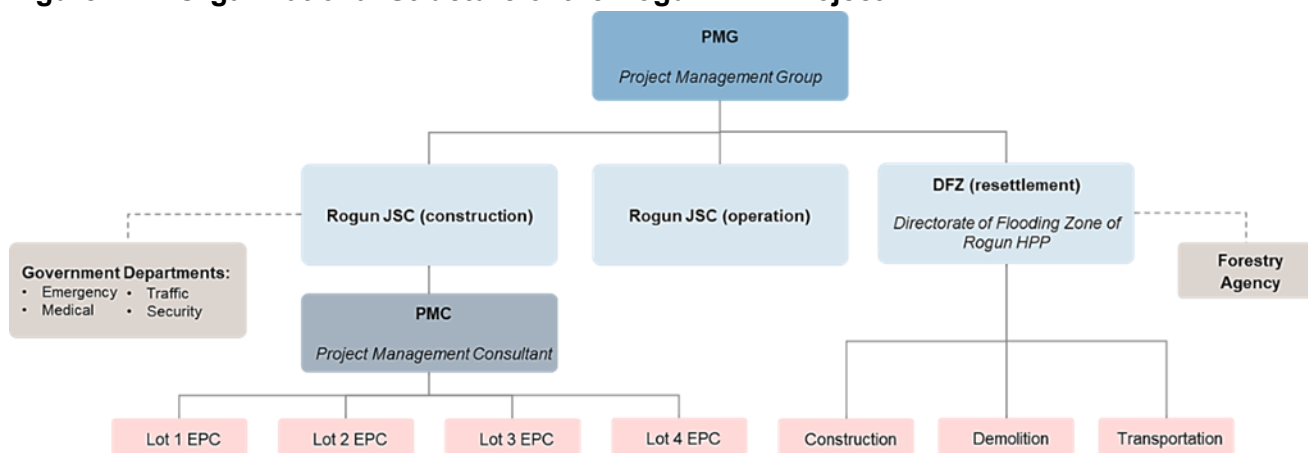
- 3.2.1. Community health and safety impacts will mainly affect the residential areas that are in close proximity to the construction compounds for the Project, and roads used to access these compounds. These residential areas, specifically Rogun City and Pasi Muhraho, will be highly sensitive to potential health and safety impacts during construction.
- 3.2.2. For the construction phase, the following risks were identified related to community health and safety;
- Potential noise pollution associated with construction work activities i.e. blasting, truck movements, excavations, ground works.
  - Potential air pollution, mainly dust resulting from groundwork and excavation, but also from vehicle movements.
  - Reduced safety of local families, women and children resulting from potential labour influx and movement of overseas workers into the area and potential local conflict, which could be exacerbated by security personnel.
  - Reduced safety as a result of unauthorized access to construction works and equipment, obstruction of local access and road diversions, increased road traffic, including construction vehicles, and increased risk of road accidents.
  - Potential exposure to hazardous materials and substances, such as asbestos, from demolition of houses in flooding-zone settlements and old factories, buildings (e.g., old cement factory to be dismantled to open up space for the incoming contractors to establish worker camps).
- 3.2.3. The construction activities for the Project include excavation and ground works which, in addition to the risks from increase traffic, could lead to direct health and safety impacts within local communities.
- 3.2.4. Outcomes from Focus Group Discussions (FGD) and Household Surveys suggest there are poor road conditions that put community safety at risk, especially where high proportions of young children live. Households with caring responsibilities, people with disabilities, and elderly people may face restrictions on accessing some of their local community assets and infrastructure when in close proximity to construction activities.

- 3.2.5. This CHSMP encompasses the actions required to mitigate effects on community health, safety and security identified in the ESIA. Additional effects on community health and safety have been identified through the completion of a Gender Action Plan, Resettlement Audit, Labour Management Procedures, and through ongoing stakeholder engagement. Actions from these studies are also included in this CHSMP to address these additional effects.
- 3.2.6. In addition to the risks identified in the ESIA, and associated studies, ESS4 emphasizes the need for the Borrower to also address the following risks to local communities;
- Universal access – the concept of universal access should be applied in the design and construction of new buildings and structures (e.g. schools, public facilities, or roads).
  - Emergency preparedness – measures need to be implemented to prevent any emergency event (including fire, explosion, leak or spill, as well as dam failure) from affecting the health and safety of communities.
  - Ecosystem services – consideration of impacts on services derived from the ecosystem by affected communities need to be considered, including food and freshwater.
  - Exposure to waterborne, water-based, water related and vector-borne diseases, and communicable and non-communicable diseases.
  - Dam safety – measures need to be adopted and implemented throughout the lifecycle of the dam.

## 4 ROLES AND RESPONSIBILITIES

- 4.1.1. The effective implementation of this CHSMP relies on a site-wide understanding of roles and responsibilities across all Project activities and personnel.
- 4.1.2. Rogun JSC, as the overseeing entity, holds ultimate responsibility for CHSMP enforcement and alignment with the Project’s ESMP and other Applicable Standards. The Project Management Consultant (PMC), acting as the Employer's Representative, will support by conducting regular audits, approving contractor-specific CHSMPs, and reinforcing site-wide compliance with community health and safety protocols.
- 4.1.3. The organizational structure for the Rogun HPP Project is illustrated in Figure 4-1. This structure reflects the distribution of authority, oversight, and operational responsibilities among the Project Management Group (PMG), Rogun JSC, the Project Management Consultant (PMC), and other key stakeholders.
- 4.1.4. Rogun JSC holds ultimate responsibility for implementing the requirements of this CHSMP across all Project activities, supported by the Project Management Consultant (PMC). The PMC shall provide regular compliance checks, approve Lot-specific CHSMPs, and ensure site-wide adherence to each minimum requirements and best practices. Contractors are required to align their operations with the guidelines outlined in this CHSMP.

**Figure 4-1 - Organizational Structure of the Rogun HPP Project**



- 4.1.5. Table 4-1 provides a breakdown of key roles and responsibilities for community health and safety. As Project activities evolve and progress to operational phases this table may be updated to ensure responsibilities remain relevant and appropriate for the identified risks.

**Table 4-1 – Roles and Responsibilities**

Role	Responsibilities
Project Management Group for Energy	The PMG holds high-level authority over the Rogun HPP Project, overseeing its alignment with overarching project objectives, compliance with national and

<p>Facilities Construction under the President of the Republic of Tajikistan (PMG)</p>	<p>international standards, and adherence to lender requirements. Key responsibilities include:</p> <ul style="list-style-type: none"> <li>■ Providing strategic oversight to ensure compliance with the ESMP and the Environmental and Social Commitments Register.</li> <li>■ Approving significant updates and changes to Project documentation to maintain alignment with evolving site conditions and operational requirements.</li> <li>■ Allocating adequate resources to support the successful implementation of this CHSMP across all project phases.</li> <li>■ Integrating community health and safety responsibilities into the Project's broader operational framework to enhance community-relations.</li> </ul> <p>PMG will appoint an Environmental and Social (E&amp;S) Manager who will hold overall responsibility for (but not limited to);</p> <ul style="list-style-type: none"> <li>■ The implementation of the CHSMP;</li> <li>■ The submission of updates for the ongoing approval of the CHSMP;</li> <li>■ Instilling and maintaining a strong culture of community health and safety across the Project; and</li> <li>■ The overall stakeholder liaison process for the Project.</li> </ul> <p>PMG is appointing a Stakeholder Engagement Lead for the Project who will be responsible for;</p> <ul style="list-style-type: none"> <li>■ All external stakeholder (including the general public) engagement activities;</li> <li>■ The implementation and management of the Grievance Redress Mechanism (GRM); and</li> <li>■ Monthly reporting on all Project-related grievances to PMG senior management.</li> </ul>
<p>Directorate of Flooding Zone (DFZ) for Rogun HPP</p>	<p>DFZ is employing an Environmental, Social, Health and Safety (ESHS) Manager who is responsible for the following:</p> <ul style="list-style-type: none"> <li>■ Overseeing the implementation and monitoring of all environmental, social, health and safety measures required for DFZ in this CHSMP; and</li> <li>■ Coordinating the required ESHS data collection and reporting to PMG.</li> </ul> <p>DFZ is employing a Senior Community Relations Manager who is responsible for:</p> <ul style="list-style-type: none"> <li>■ Managing and coordinating the District Livelihood and Engagement Officers (DLEOs);</li> <li>■ Managing and overseeing the GRM in communities; and</li> <li>■ Providing monthly reports on community grievances to the PMG Stakeholder Engagement Lead.</li> </ul> <p>DFZ is employing one DLEO and one assistant DLEO in each district (one female, one male within the impacted districts of Rasht, Rogun City, Nurobod, Faizobod, Tursunzoda, Dangara, and Rudaki). The DLEO responsibilities include:</p> <ul style="list-style-type: none"> <li>■ Undertaking all community-related stakeholder engagement activities including the implementation of the GRM;</li> <li>■ Visiting, and leading consultations, in each village on a monthly basis; and</li> <li>■ Supporting the collection of health and safety data within affected districts.</li> </ul>

<p>Rogun JSC</p>	<p>Rogun JSC serves as the client and on-site project authority responsible for overseeing community relations and approving the CHSMP.</p> <p>Rogun JSC is employing Health, Safety and Environment (HSE) Lead whose key responsibilities include:</p> <ul style="list-style-type: none"> <li>■ Developing and disseminating the CHSMP within three months of the effective date, establishing baseline community health and safety requirements and responsibilities for all contractors.</li> <li>■ Reviewing, approving, and implementing the CHSMP, ensuring alignment with Project objectives and ESIA requirements.</li> <li>■ Ensuring alignment of all contractor-specific Community Health and Safety Plans with the CHSMP and applicable standards.</li> <li>■ Conducting regular on-site audits and inspections to assess CHSMP compliance, with findings reported to the PMG as necessary (no less than monthly).</li> <li>■ Documenting incidents, manage incident reporting process, and manage adaptive management in response to incidents (as required).</li> <li>■ Collaborating with the PMC (Employer's Representative) and other stakeholders to monitor and mitigate community-related risks.</li> </ul> <p>Rogun JSC is employing a Stakeholder Engagement Lead whose responsibilities include:</p> <ul style="list-style-type: none"> <li>■ Delivering stakeholder engagement activities for community residents within the Project site (Pasi Muhraho) and Rogun City;</li> <li>■ Implementing and managing the GRM for community residents within the Project site and Rogun City; and</li> <li>■ Doing monthly reporting on Project-related grievances to the PMG Stakeholder Engagement Lead.</li> </ul>
<p>Project Management Consultant (PMC)</p>	<p>Act as the Employer's Representative, ensuring contractors' compliance with CHSMP standards.</p> <p>PMC will be responsible for appointing a Social Lead whose responsibilities will include:</p> <ul style="list-style-type: none"> <li>■ Supervising the contractors to ensure that recommendations and requirements, as set out in the CHSMP are applied.</li> <li>■ Undertaking continuous monitoring of the processes and activities undertaken by contractors and specifying measures to be implemented by contractors to address any areas of non-compliance.</li> </ul>

4.1.6. An indicative structure of reporting lines for roles described above is set out in Figure 4-2.

Figure 4-2 - Reporting Lines for Roles related to Community Health and Safety



## 5 COMMUNITY HEALTH AND SAFETY MANAGEMENT

---

- 5.1.1. This section presents the community health and safety mitigation measures and key performance indicators (KPIs) required to address the identified risks associated with the Project. These measures are subject to updating if or when new relevant information comes to light (e.g. as a result of stakeholder consultation), with any such change implemented by PMG to the approval of the Lenders.
- 5.1.2. The Mitigation Measures and KPIs for each risk area are presented within Table 5-1.

**Table 5-1 – Community Health and Safety Mitigation and Monitoring**

Subject	Mitigation Measures & Monitoring Requirements	Responsibility	Key Performance Indicators
<p><b>Construction related activities: Behaviour of workers associated with the Project on local community</b></p>	<p>Contractors, suppliers and service providers are required to fully comply with the Rogun HPP Code of Conduct (CoC).</p>	<p>Rogun JSC</p>	<p>100% of contractual agreements outline provisions and requirements within the CoC.</p> <p>Number of grievances received about Project contractors, suppliers and service providers.</p> <p>Number of grievances resolved on time.</p>
<p><b>Construction related activities: Identifying health and safety issues as they arise in the local community</b></p>	<p>Two DLEOs, one male and one female, to assist in stakeholder engagement plan (SEP) implementation and public consultation.</p>	<p>DFZ</p>	<p>2 DLEOs appointed for each affected location.</p> <p>Number of visits each DLEO makes to their affected villages.</p> <p>Number of community/stakeholder activities undertaken.</p>
<p><b>Construction related activities: noise and blasting</b></p>	<p>Blasting signs are to be conspicuously place along the edge of the blast site and area where flying debris may occur.</p> <p>Access within the blasting area will be controlled to prevent presence of unauthorized persons or animals during blasting. Access will remain controlled until an authorized representative of the operator has reasonably determined that: no unusual hazards, such as imminent slides or undetonated charges, exist, and access to and travel within the blasting area can be safely resumed.</p> <p>Blasting schedules will be distributed to affected residents and local governments including the name,</p>	<p>DFZ Rogun JSC</p>	<p>Number of community members/stakeholders engaged and informed about blasting.</p> <p>100% blasting scheduled agreed with stakeholders.</p> <p>100% written notifications in place and recorded.</p> <p>100% warning signs in place and maintained in good condition.</p> <p>Number of incidents associated with blasting (including near misses).</p>

Subject	Mitigation Measures & Monitoring Requirements	Responsibility	Key Performance Indicators
	<p>address and telephone number of the operator; an identification of the specific areas in which blasting will take place; the dates and time periods when explosives are to be detonated; the methods to be used to control access to the blasting areas; and the type of patterns of audible warning and all-clear signals to be used before and after blasting.</p> <p>Affected residents will receive a written notification at least 30 days in advance of a nearby blasting as well as two (2) more written reminders. This notification will include the blasting schedules, as well as the name, address and telephone number of the operator; an identification of the specific areas in which blasting will take place; the dates and time periods when explosives are to be detonated; the methods to be used to control access to the blasting areas; and the type of patterns of audible warning and all-clear signals to be used before and after blasting.</p> <p>Some residents may experience noisy activities over a long duration during the construction period (e.g. a year) and should be offered the opportunity to relocate to temporary accommodation during this period. Suitable like-for-like temporary accommodation should be provided for those residents affected by noisy activities.</p>		<p>Number of accident/incident investigations carried out.</p> <p>Number of grievances logged relating to noisy activities.</p> <p>Number of grievances resolved on time.</p> <p>Number of residents relocated due to noisy activities.</p>
<p><b>Construction related activities:</b> <b>Unauthorised site access</b></p>	<p>Construction areas, inclusive of open excavations, stockpiles and construction equipment will be surrounded by barricades with appropriate warning signs to protect workers, the public, as well as animals.</p> <p>Barriers will be maintained to prevent unauthorized access onto the Project Site.</p> <p>A programme of stakeholder engagement and consultation will be undertaken to educate local communities of the risks of blasting and trespassing</p>	<p>Rogun JSC EPC Contractor(s)</p>	<p>Number of trespassing incidents.</p> <p>Number of grievances logged relating to unsecured site boundaries.</p> <p>Number of grievances resolved on time.</p>

Subject	Mitigation Measures & Monitoring Requirements	Responsibility	Key Performance Indicators
	<p>onto sites, the meaning of signs, the risks of playing on or near equipment or entering fenced areas. This will include presentations in schools local to the Project.</p> <p>A community meeting on site safety will be given in communities in proximity to the Project (in Rogun City and Pasi Muhraho). Records of the meeting and attendees will be kept.</p> <p>In order to reduce the likelihood of people trespassing to seek job opportunities in the Project, the site safety signage will include a warning stating that recruitment at the construction site will not be permitted. All job advertisements will clearly state no recruitment will be done on the construction site.</p>		
<p><b>Construction related activities: Construction compound locations</b></p>	<p>Consult with affected communities on suitable construction compound locations in accordance with environmental, social and economic criteria, as required in the ESMP and SEP.</p>	<p>Rogun JSC EPC Contractor(s)</p>	<p>Number of consultation activities held to discuss construction compound locations.</p> <p>Number of community members/stakeholders engaged and informed about compound locations.</p> <p>Number of grievances received.</p> <p>Number of grievances resolved on time.</p>
<p><b>Construction related activities</b></p>	<p>Ensure the public have access to the Project GRM so they can raise their concerns to the DLEOs (as detailed in the SEP).</p> <p>The GRM will include:</p> <ul style="list-style-type: none"> <li>· Provisions for anonymous submissions;</li> <li>· A procedure for how severe cases will be referred; and</li> <li>· Roles and responsibilities for management and monitoring of the GRM.</li> </ul>	<p>Rogun JSC EPC Contractor(s)</p>	<p>Number of engagement activities to inform stakeholders of the GRM.</p> <p>Number of community members / stakeholders engaged and informed about the GRM.</p> <p>Number of grievances received.</p> <p>Number of grievances resolved on time.</p>

Subject	Mitigation Measures & Monitoring Requirements	Responsibility	Key Performance Indicators
	<p>Establish channels for reporting grievances, including:</p> <ul style="list-style-type: none"> <li>· Email address;</li> <li>· Online platform for submissions;</li> <li>· Phone number;</li> <li>· Written address; and</li> <li>· Grievance boxes.</li> </ul> <p>The GRM will be communicated via:</p> <ul style="list-style-type: none"> <li>· Project website;</li> <li>· Social media;</li> <li>· email</li> </ul> <p>SMS messaging and</p> <ul style="list-style-type: none"> <li>· Internal news boards.</li> </ul>		
<p><b>Infrastructure and Equipment Design and Safety: Universal access</b></p>	<p>Infrastructure provided in resettlement sites should apply the concept of universal access where all new schools and public facilities allow for unimpeded access for people of all ages and abilities, in different situations, and under various circumstances.</p> <p>All infrastructure should be fully operational prior to affected households relocating to a settlement.</p> <p>Infrastructure should be sufficient to cope with the demands of the size of the newly relocated population.</p>	<p>DFZ PMG</p>	<p>100% of infrastructure (including schools, roads, water supplies, etc) are complete and functional in a settlement before receiving new residents.</p> <p>100% of infrastructure is designed to accommodate all members of a resettled population.</p>
<p><b>Traffic and Road Safety</b></p>	<p>Project Vehicle Drivers Training: Drivers operating Project vehicles will receive comprehensive training on safe driving practices, emphasizing consideration for other drivers, pedestrians, and livestock.</p>	<p>DFZ Rogun JSC</p>	<p>100% of drivers trained and have driving license.</p>

Subject	Mitigation Measures & Monitoring Requirements	Responsibility	Key Performance Indicators
	<p>Road Diversions and Closures: Advance notice will be given for any planned road diversions or closures. Works will be planned to be delivered safely, minimizing risks and disruption to road users.</p> <p>Vehicle Identification: Project vehicles will be clearly identifiable through visible signage or symbols, indicating their association with the Project.</p> <p>GRM: All relevant staff members will be well-informed about their roles in addressing concerns raised by local stakeholders.</p>		<p>Number of Community members/stakeholders engaged with on road safety.</p> <p>Number of community meetings carried out.</p> <p>Number of community members informed of traffic route diversions.</p> <p>Zero Road Traffic Accidents involving Project vehicles.</p> <p>Zero incidents of speed exceedances.</p> <p>Zero vehicles that fail inspections for roadworthiness.</p> <p>Number of grievances logged relating to disruption to road users.</p> <p>Number of grievances resolved on time.</p>
<b>Traffic and Road Safety</b>	<p>Establish safe transportation services as required to enable women and vulnerable persons to access social and economic opportunities.</p> <p>The necessary services will be identified through engagement with affected villages to understand their needs.</p> <p>Likely transportation services will include transportation for female Rogun HPP employees, and transportation for women and girls to access training and education opportunities.</p>	<p>DFZ (planning within new communities)</p> <p>Jamoats (transportation for children)</p>	<p>Number of community members/stakeholders engaged in relation to transportation service needs.</p> <p>Number of transportation services provided, including the number of service users.</p> <p>Number of grievances logged relating to transportation services or lack of / inadequacy of these.</p>
<b>Ecosystem Services</b>	<p>Future resettlement sites will need to consider the availability of pasture capacity to ensure resettled households have access to pastureland.</p>	<p>DFZ</p> <p>PMG</p>	<p>Capacity assessments for pastureland and agricultural land undertaken for all potential resettlement sites.</p>

Subject	Mitigation Measures & Monitoring Requirements	Responsibility	Key Performance Indicators
	<p>The Project should not interfere with communities accessing land associated with food supplies (e.g. orchards) and/or agriculture. Resettlements sites should consider the availability of land for agriculture and ensure Project activities (e.g. road traffic) do not impede access.</p>		<p>Number of grievances logged relating to ecosystem services.</p> <p>Number of grievances resolved on time.</p>
<p><b>Community Exposure to Health Issues: Gender Based Violence (GBV) and Harassment</b></p>	<p>Include appropriate clauses relating to Gender-Based Violence (GBV) / Sexual exploitation and abuse (SEA) / Sexual Harassment (SH) in a Code of Conduct (CoC) applicable to all Project workers and staff, including security staff.</p> <p>Provide GBV/SEA/SH training to security workers as part of the Construction Workers CoC (in the Construction Management Plan).</p> <p>Explicitly prohibit sexual interaction of any kind with underage persons in the CoC.</p>	<p>Rogun JSC DFZ PMG</p>	<p>CoC in place that meets Lender standards and includes GBV/SEA/SH issues.</p> <p>GBV/SEA/SH training delivered to 100% of security workers.</p> <p>Number of grievances logged relating to GBV/SEA/SH.</p> <p>Number of grievances resolved on time.</p>
<p><b>Community Exposure to Health Issues: Transmission of communicable diseases</b></p>	<p>Establish a method for additional community health checks, monitoring of communicable diseases, and awareness on prevention of diseases.</p> <p>A Workforce CoC detailing specific values, living and working conditions, which will contribute to reduce the risks of disease transmission into the community as well as a GRM. The CoC will expressly prohibit sexual interactions of any kind with underage persons.</p> <p>Workforce, including contractors and subcontractors, will be provided with health awareness training, including a significant briefing of hygiene practices (such as hand washing), implementation of educational outreach to increase awareness of major communicable disease and how to protect against infection and about transmission routes and the symptoms of the</p>	<p>DFZ PMG</p>	<p>Number of cases of communicable diseases in total and by disease.</p> <p>Number of cases of vector borne diseases in total and by disease.</p> <p>Number of cases of STDs in total and by disease.</p> <p>Number of disease cases referred for treatment at other, offsite health facilities.</p> <p>100% of workers that have received pre-employment health screening.</p> <p>Number of grievances received related to community health.</p>

Subject	Mitigation Measures & Monitoring Requirements	Responsibility	Key Performance Indicators
	<p>communicable diseases of concerns (including sexually transmitted diseases (STDs) and COVID-19).</p> <p>Pre-employment screening protocols will be conducted for all employees including contractors and subcontractors, which will include checks for COVID-19, and testing for TB and other diseases appropriate to WHO recommendations, the individual's country of origin and vaccinations.</p> <p>Workers will be provided with primary health care and basic first aid onsite.</p> <p>Regular medical check-ups and centralized medical treatment for all workers of the Project will be provided.</p> <p>Workers will be provided with appropriate sanitary facilities, which are appropriately designed to prevent contamination.</p> <p>A robust waste handling system to avoid the creation of new vector breeding grounds or attracting rodents to the area will be developed.</p> <p>Measures to reduce the presence of standing water onsite through environmental controls and source reduction to avoid the creation of new breeding grounds will be implemented.</p>		<p>Number of grievances resolved on time.</p>
<p><b>Management and Safety of Hazardous Materials</b></p>	<p>Asbestos containing material (ACM) identified within community structures shall be removed from the demolition arisings prior to granting residents an opportunity to salvage structural materials.</p> <p>Sample surveys to identify potential asbestos containing material will be carried out, and the asbestos register will be updated when materials are found, including the location of materials.</p>	<p>Rogun JSC DFZ Appointed Competent Party</p>	<p>Proportion of surveys completed to total buildings.</p> <p>Number of Asbestos Surveys completed for demolitions.</p> <p>100% of asbestos containing materials stored and/or disposed of.</p>

Subject	Mitigation Measures & Monitoring Requirements	Responsibility	Key Performance Indicators
	<p>The Appointed Competent Party will produce education materials for local communities to inform them of the health risks associated with asbestos, and on how to identify common materials that could be present in their homes and community structures.</p>		<p>100% of households receive educational materials on asbestos.</p>
<p><b>Dam Safety and Emergency Preparedness and Response</b></p>	<p>A Dam Safety and Emergency Response Management Plan will be prepared which outlines the processes and procedures to protect the health and safety of affected communities.</p> <p>Regular education campaigns will be held in schools and community centres within affected communities to raise awareness of hazards associated with the reservoir including drowning.</p> <p>Warning signs will be installed and maintained along the shore of the reservoir. Access to particularly high risk areas will be prevented with barriers (e.g. fencing).</p> <p>A community warning system will be established so that a system of alarms can announce sudden water level fluctuations.</p> <p>A dam Emergency Action Plan (EAP) will be prepared and include:</p> <ul style="list-style-type: none"> <li>- A definition of emergency conditions and downstream area of impact.</li> <li>- Pre-planned actions to take to minimise loss of life, damage to property, and damage to the environment in the event of an emergency.</li> <li>- Notification flowchart detailing who should be notified and when.</li> </ul>	<p>Rogun JSC</p>	<p>EAP is in place.</p> <p>Number of engagement activities held on dam safety.</p> <p>Number of community members / stakeholder engaged on dam safety / emergency preparedness.</p> <p>Number of incidents associated with dam safety (including near misses).</p>

Subject	Mitigation Measures & Monitoring Requirements	Responsibility	Key Performance Indicators
	<ul style="list-style-type: none"> <li>- Roles and Responsibilities for EAP tasks.</li> <li>- Actions to mitigate potential impacts.</li> <li>- Maps to identify potentially flooded areas in an emergency event.</li> </ul>		
<b>Security personnel</b>	<p>Security arrangements will be based on the Voluntary Principles for Security and Human Rights which are international best practice. Security arrangements will be made transparent to the local communities. Consultation with them about the impact of arrangements will take place regularly.</p> <p>Complaints by the public (or other workers) with respect to behaviour of Security Personnel will be managed via the GRM.</p>	Rogun JSC	<p>100% of security personnel have pre-employment background checks.</p> <p>100% security personnel (direct employees, subcontractors, and suppliers) received task specific training on Voluntary Principles for Security and Human Rights.</p> <p>Number of grievances received regarding security personnel.</p> <p>Number of grievances resolved on time.</p> <p>CoC in place.</p>

## 5.2 MONITORING

- 5.2.1. Table 5-1 includes a summary of the monitoring requirements to be delivered under the CHSMP, together with the pathways to inform adaptive management on the Project. This table should be updated as required (e.g. upon findings from additional survey effort) to ensure an effective monitoring strategy is adopted.
- 5.2.2. Monitoring of community health and safety should be undertaken to:
- Assess the effectiveness of mitigation actions, and other related actions/controls;
  - Assess actual impacts against predicted impacts; and
  - Assess compliance with applicable legal and other requirements.
- 5.2.3. Mitigation measures identified in Table 5-1 should be in place no later than 60 days after the Project becomes effective, remain for the duration of the Project, and as per any relevant associated plans including the SEP, RLRf, RAP 2/LRP 2 and LMP.
- 5.2.4. Monitoring of the KPIs set out in Table 5-1 will be the responsibility of the parties identified in Table 5-1. Performance against the KPIs will be reported on a monthly basis.
- 5.2.5. Actions arising from monitoring of the KPIs will be collated into the centralized Corrective Action Register (CAR) as detailed in the ESMP and reviewed monthly.

## 5.3 REPORTING

- 5.3.1. Any community health or safety incidents which meet the requirements for incident notification must be reported with the incident management procedures as described in the ESMP.
- 5.3.2. Monthly internal reports will be generated by the E&S Manager to report any community health or safety related incidents that have occurred across the Project.
- 5.3.3. PMG will review all community health and safety reports to ensure actions and feedback required are completed and recorded.

